

# Community Health Assessment underway with online survey



## Health and Wellness

Natalie Peters  
Dallas County Public Health  
Special to Perry Chief

You can help make our community a healthier place! The Dallas County Health Department is currently conducting the 2024 Community Health Assessment in partnership with the Polk County and Warren County health departments, as well as several other community organizations.

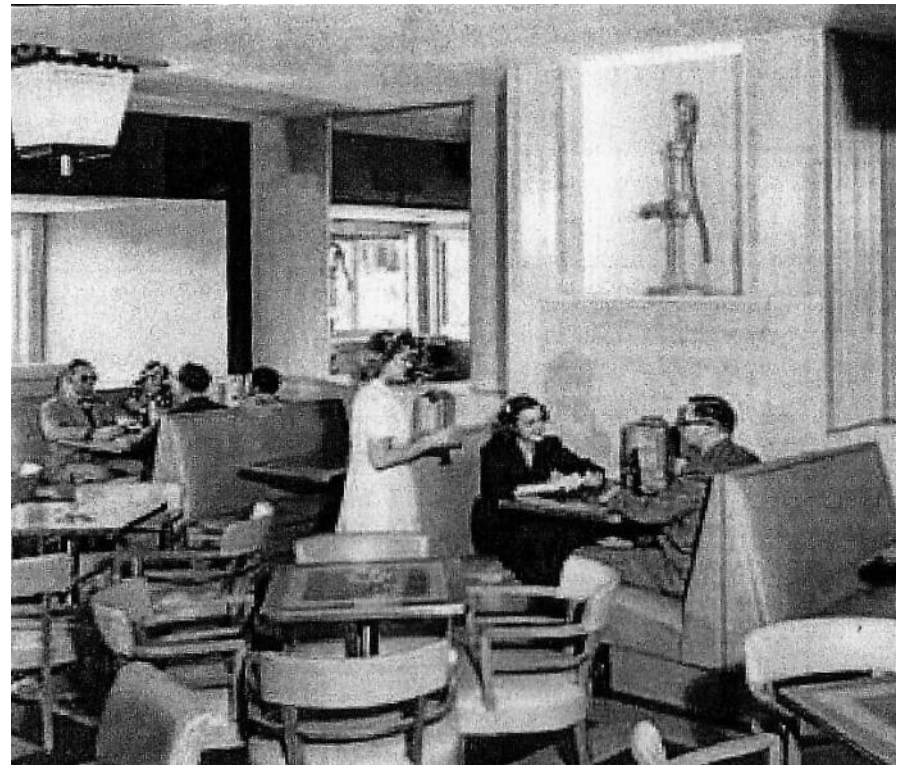
We are conducting an online survey to understand the health status of our community. The survey includes questions on several areas of health such as access to healthcare, chronic disease management, mental health, substance abuse, and social determinants of health.

Results of the survey will guide health improvement activities in Dallas County and the surrounding area for the next 3-5 years.

The last Community Health Needs Assessment was conducted in 2021. At that time, the community's top five healthy priority areas were mental health; COVID-19; nutrition, physical activity & weight; substance abuse; and heart disease & stroke.

You can view the 2021 Community Health Needs Assessment summary and Dallas County Health Improvement Plan for 2023-2025 on the Dallas County Health Department website: [www.DallasCounty.gov](http://www.DallasCounty.gov).

The anonymous survey is offered online and is expected to take about 10 minutes. We value your participation! To take the survey, go to [www.prcsurvey.com/begin/CentralIowaCH-NA2024](http://www.prcsurvey.com/begin/CentralIowaCH-NA2024).



Did you know... where this business was located? PROVIDED BY LARRY VODENIK

## DID YOU KNOW?

Larry Vodenik Special to the Chief

Did you know... where this business was located? This is the lounge in the Town Pump.

The Pump was located inside the Hotel Pattee. I remember the blond furniture and 50s décor that was also part of the restaurant as well.

Later the Hotel Pattee became the Escadrille Inn with a World War One décor. I tended bar at the Escadrille for a while, when Perry was home to many bars and taverns.

Where did you go on a Friday or Saturday night?

## Wall of Witnesses nominations open through May 15

Special to the Chief

Hometown Heritage is taking nominations for the 2024 Wall of Witnesses. Nomination forms can be picked up at the Carnegie Library Museum or online at [hometownheritage.org/wall-of-witnesses-nomination.html](http://hometownheritage.org/wall-of-witnesses-nomination.html)

Community members are invited to

nominate an individual that meets the following criteria: 1) had a tie with Perry, 2) has had an impact on the area, and 3) has an interesting story.

The deadline for new nominations is May 15. The new nominees will be considered together with nominees from previous years. The 2024 unveiling ceremony is planned for September 2024.

## AROUND THE COUNTY

### Care Closet

9 a.m. - 1 p.m. May 3-4 at Crossroads Church.

The Crossroads Church Care Closet will be open from 9 a.m. to 1 p.m. on Friday, May 3 and Saturday, May 4. Everything is free!

### Bouton Breakfast

7-10 a.m. Saturday, May 4 at Bouton Community Center.

Come enjoy an all-you-can-eat breakfast with sausage, ham, eggs, pancakes, biscuits and gravy, hash browns, toast and drinks. The cost is \$9 for adults and \$5 for kids ages 5-12, under 5 are free. Bake sale items will also be available. This will be the last breakfast this spring. Save the date for future breakfasts on Oct. 5, Nov. 2 and Dec. 7.

### Safety Bike Rodeo

9-11 a.m. Saturday, May 4 at Adel City Hall parking lot, 301 S 10th St., Adel.

Children ages 5-12 are invited to bring their bicycles and helmets, along with their parent(s), to participate in the 5th Annual Safety Bike Rodeo on Saturday, May 4. This come-and-go event is free and offers interactive activities for children, free giveaways and a drawing for prizes. Children completing the safety course will receive a certificate of completion, bike safety information, a Rotary flyer, an icee and a bottle of water. Other activities include tours of a police car and a fire engine and the opportunity to visit with an Adel Police Officer and Adel Firefighters.

### Plant Sale

9 a.m. - 2 p.m. Saturday, May 4 at Dallas County Fairgrounds Community Building, 28061 Fairground Dr. Adel.

The Dallas County Master Gardeners plant sale will return on Saturday, May 4. All proceeds will benefit the Dallas County Master Gardeners' demonstration garden. The event is open to the public. Items for sale will include perennials, annuals, vegetables, house plants, succulents, horticulture books, pre-potted ar-

ranged plants, plant containers and garden art.

### Ham Ball Dinner

11:30 a.m. Sunday, May 5 at Dexter United Methodist Church.

Dexter United Methodist Church will host a ham ball dinner on Sunday, May 5. The menu includes ham balls or meat loaf, cheesy potatoes, green beans and pie. Dine in or carry-out options are available. Call 515-250-9012 for curbside pickup. A free-will offering will be taken.

### Woodward Social Center Luncheon

11:30 a.m. - 12:30 p.m. Monday, May 6 at Woodward Social Center.

The Woodward Social Center will serve a luncheon on Monday, May 6. The menu includes sloppy joes, potato salad, baked beans and dessert. A free-will offering will be taken to support the Woodward Social Center.

### Adel Community Blood Drive

9 a.m. - 12:30 p.m. Wednesday, May 8 at 312 Nile Kinnick Drive S, Adel.

LifeServe Blood Center donors are true life savers! When blood donors roll up their sleeves, it only takes one hour to donate one pint of blood, which will save the lives of up to three local hospital patients. Become a hero today by donating blood! Sign up to give the gift of life at an upcoming blood drive near you. The Adel Community Blood Drive will be held from 9 a.m. to 12:30 p.m. on Wednesday, May 8. Schedule a blood donation appointment online at [lifeservebloodcenter.org](http://lifeservebloodcenter.org) or call 800.287.4903.

### Free Community Supper

5:30-6:30 p.m. Wednesday, May 8 at Heartland Church of Christ, 14417 J Ave, Perry.

All are welcome to join us at Heartland Church of Christ, just west of Hy-Vee, for supper on the 2nd Wednesday of every month from 5:30 to 6:30 p.m. - no charge. Dine in or carry out. Handicap accessible. Take a night off cooking and let us serve you!

### Fiber Festival of Perry Retreat Classes

Thursday, May 9 in Perry.

This year the Fiber Festival of Perry won't be just one day of awesome booths and demonstrations; we're adding a 3-Day Fiber Retreat to kick off the weekend with classes, demonstrations, knowledge sharing and community! The Class Pass only includes access to the class you select. No rooms, meals, swag, or other activities are included with purchase of this pass. Additional spots are open for the classes on Thursday, May 9, which include classes for crocheters, weavers and knitters. Find more information and purchase tickets at [atelierat1109.com/products/thursday-retreat-classes](http://atelierat1109.com/products/thursday-retreat-classes).

### May Sip & Shop

4-7 p.m. Friday, May 10 at Perry businesses.

Enjoy an after-hours shopping experience at Perry Businesses on Friday, May 10. Shop warm-weather apparel, décor, gifts and more while sipping complimentary refreshments at each location! Refreshments and in-store offerings vary per location. Find more information on the Perry Chamber's Facebook page.

### Mother's Day Weekend Hike

10-11 a.m. Saturday, May 11 at Voas Nature Area.

Let's celebrate the moms of our world with a hike at Voas Nature Area! On the Saturday morning of Mother's Day Weekend, we'll take a walk and discuss how some wild mothers take care of their own young. Registration is required through DCCB's Eventbrite page.

### Fiber Festival of Perry

10 a.m. - 4 p.m. Saturday, May 11 at Hotel Pattee.

This year's Fiber Festival of Perry will include three beginner classes, including Beginning Drop Spindle, Beginner Knitting, and 2D Needle Felting! Tickets are available at [www.atelierat1109.com](http://www.atelierat1109.com). Visit the Hotel Pattee for our amazing selection of local vendors that will have yarns,

spinning wheels, drop spindles, woven and knit goods, fiber arts supplies and so much more for sale. Plus view quilts and learn from the members of the Perry Piecemakers Quilt Guild in lower level as well as demonstrations by the Des Moines Weavers and Spinners Guild in the Courtyard Cafe. Twisted Sunset Sisters Fiber Mill will host an open house from 9 a.m. - 4 p.m. on May 11. Swing by 1118 W 3rd St. in Perry and see how fluff becomes yarn. Atelier at 1109 artists have created a yarn bomb display located at 1109 2nd St. and Soumas Court in downtown Perry. This display not only includes the annual lightposts decorated in new handknit wrappings, but an approximate 14 ft x 14 ft crocheted display and numerous themed fiber pieces throughout Soumas Court to go along with this year's theme, Alice in Fiberland.

### Wall of Witnesses Nominations

Saturday, May 15.

Hometown Heritage is taking nominations for the 2024 Wall of Witnesses. Nomination forms can be picked up at the Carnegie Library Museum or online at [hometownheritage.org/wall-of-witnesses-nomination.html](http://hometownheritage.org/wall-of-witnesses-nomination.html). The deadline for new nominations is May 15. The new nominees will be considered together with nominees from previous years. The 2024 unveiling ceremony is planned for September 2024.

### Job Fair

12-5 p.m. Thursday, May 16 at National Guard Armory, 2930 Willis Ave., Perry.

A job fair will be held on Thursday, May 16 for impacted Tyson employees. Nearly 100 employers will be on hand looking to hire employees. If you require a reasonable accommodation in order to participate in the event, contact Sara Bath by May 10 at [sara.bath@iwd.iowa.gov](mailto:sara.bath@iwd.iowa.gov). For more information, email [DesMoinesIowa-WORKS@iwd.iowa.gov](mailto:DesMoinesIowa-WORKS@iwd.iowa.gov) or call 515-281-9619.

To submit events to be included in the *Around the County round-up*, email [news@adelnews.com](mailto:news@adelnews.com) or [news@theperrychief.com](mailto:news@theperrychief.com).

## PERRY CHIEF

### HOW TO CONTACT US

Our office: 400 Locust St. Ste. 500, Des Moines, IA 50309.

As a safety measure during the pandemic, the office is not open to in-person business at this time.

Circulation: [circulation@amestrib.com](mailto:circulation@amestrib.com)

Director of Sales: Chad Giddens, [cgiddens@localiq.com](mailto:cgiddens@localiq.com)

Obituaries: [PerryChiefObits@Gannett.com](mailto:PerryChiefObits@Gannett.com)

Classifieds: [classifieds@amestrib.com](mailto:classifieds@amestrib.com)

### Editor

Allison Ullmann (515) 465-4666  
[aullmann@theperrychief.com](mailto:aullmann@theperrychief.com)

### General News/Sports

[news@theperrychief.com](mailto:news@theperrychief.com)

### Legals

[legals@amestrib.com](mailto:legals@amestrib.com)

Perry Chief (USPS 428-260), is published each Thursday at 400 Locust St. Ste. 500, Des Moines, IA 50309.

Copyright: The contents of this newspaper are protected by copyright. Other than for noncommercial, personal use of a limited nature, no part of this publication may be copied OR reproduced in any way without the prior written consent of the publisher. © 2024 Gannett Co., Inc. All rights reserved.

Circulation: Annual Subscription Rates: In Iowa \$46; Out of state \$50. Six Month Rates: In Iowa \$26; Out of state: \$30. "Easy Pay" option is also available. Please call 515-465-4666. Periodicals postage paid at USPS in Perry, Iowa.

Postmaster: Send address changes to Perry Chief, 7950 Jones Branch Dr., McLean, VA 22107.

Disclaimer: Print delivery available only within the newspaper distribution area. By submitting your

address and/or email, you understand that you may receive promotional offers from Gannett and its related companies. You may unsubscribe from receiving any such offers at any time by calling 515-465-4666. The advertised price for the Offer includes the one-time \$3.99 activation fee for new subscribers. The advertised price does not include the charges for any premium editions.

Premium editions are published to provide additional information and value to our readers. You agree that you will be charged up to an additional \$2.00 for each premium edition published and delivered to you during your subscription period, in addition to the cost of your subscription. The length of your subscription will be shortened by the publication of premium editions if those premium editions are delivered to you during your subscription. You may elect to be billed separately for premium editions by contacting Customer Service at 515-465-4666.

Thus, unless you elect to be billed separately up to an additional \$2.00 for each premium edition, you

agree that the length of your subscription will be shortened in proportion to the value of the number of premium editions published and delivered to you during your subscription period.

As an illustrative example, if you select a subscription of up to 12 weeks at a cost of \$48.00, and two premium editions at \$2.00 each are published and delivered to you during that subscription period, your subscription will be shortened by 1 week because the weekly cost of the subscription is \$4.00 per week and the premium edition charges total \$4.00.

Depending upon the length of your subscription and the timing of the publication and delivery of premium editions, you will not be charged for any premium editions if none are published and delivered to you during your subscription. As such, in that case only, the length of your subscription will not be shortened. The timing of the publication and delivery of premium editions is variable. There will be no more than four premium editions published during the calendar year. For more information or to cancel your subscription please call, 515-465-4666.