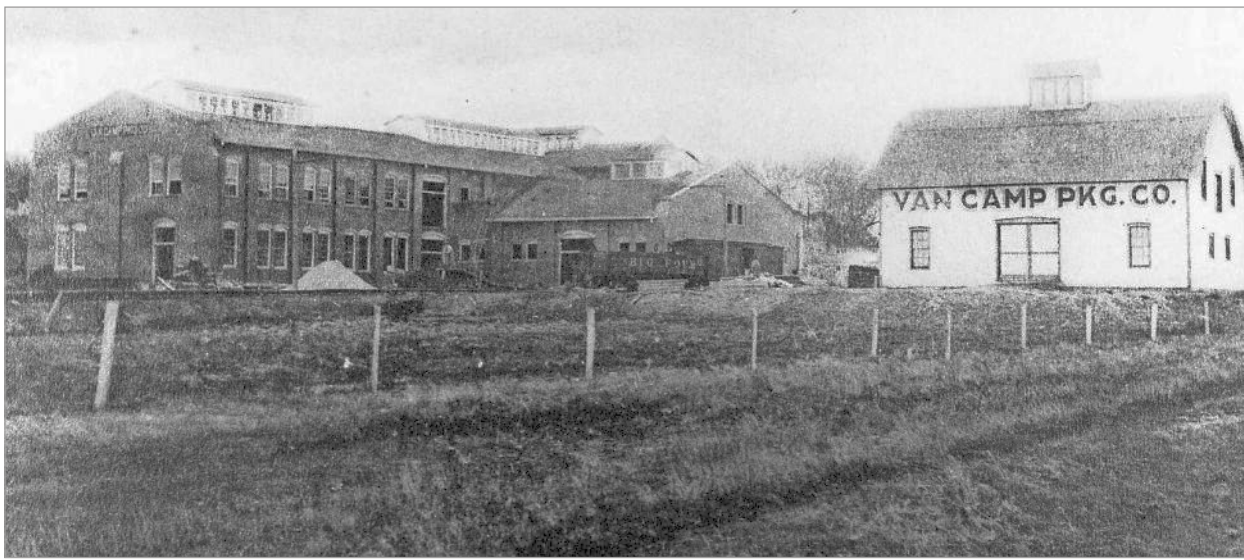


DID YOU KNOW?

Larry Vodenik Special to the Chief

Did you know... where this building was located? This is a north side and rear view of the Van Camp Pkg. Co. The building built in 1904, still located at 715 1st St. today, has had many owners and uses over the years. It was home to a milk creamery and later a packing plant. In 1922 it became Perry Milk Products and finally, Meadow Gold Ice Cream which closed in 2000. The white building is long gone, but the large brick structure lives on. When it was Meadow Gold I worked one summer as a teenager, peddling ice cream from a bike-mounted cooler, that I rode around town. I was not paid by the hour, I was paid a commission on each ice cream treat I sold. I learned that Perry was not as flat as I once thought when I peddled that heavy cart full of ice cream treats and dry ice around town.



Did you know... where this photo was taken? PROVIDED BY LARRY VODENIK



Natalie Peters
Dallas County Health Department
Special to Perry Chief
Guest Columnist

Distracted driving causes thousands of deaths in US

Some people think that distracted driving is no big deal.

In reality, it's a widespread problem that causes thousands of deaths in the United States every year.

- There are three types of driving distractions:
- Visual - Taking your eyes off the road
 - Manual - Taking your hands off the wheel
 - Cognitive - Taking your mind off driving

The most common source of distracted driving is cell phone use. It is illegal to text and drive in Iowa — punishable by a \$100 fine. At 55 miles per hour, sending or reading a text is like driving the length of a football field with your eyes closed. While texting while driving is extremely dangerous, the problem goes beyond this one behavior.

Eating, talking on the phone, typing into or scrolling through navigation or music apps, or searching for items in your vehicle while driving are also common examples of distracted driving.

There are several practices you can follow to prevent yourself and loved ones from driving distracted.

First, prepare before you go. Send any texts that you need to, prepare your maps and music, and eat before you drive so you aren't tempted to do so on the road.

If you need to do these tasks after you start driving, pull over and park in a safe area first.

If you have a habit of reaching for your cell phone while driving, put it in the passenger glovebox, back seat, or another location out of reach before you hit the road.

If driving with a passenger, you can have them use your phone for you.

As a passenger, speak up and hold your family and friends accountable if you notice they are driving distracted. Offer to use their phone or do other distracting tasks for them.

AROUND THE COUNTY

Veterans Benefit and Job Fair

11 a.m. - 2 p.m. Thursday, April 25 at Perry Elks Lodge, 2823 Willis Ave., Perry.

Area veterans are invited to explore their available benefits and research career opportunities with local businesses on Thursday, April 25. Find a list of vendors on the Dallas County Veterans Iowa Veterans Affairs Facebook page.

Minburn Citywide Garage Sales

April 27 weekend around Minburn.

The Minburn Citywide Garage Sales will be held the weekend of April 27. Maps will be available at the post office and library. A free-will donation book sale will also be held from 8 a.m. to noon on Saturday, April 27 at the Minburn Public Library. Donuts, juice and coffee will be provided.

Pancake Breakfast

7-10 a.m. Saturday, April 27 at Washington Township School, eight miles south of Perry on P58 at the intersection with F31.

A pancake breakfast will be held from 7-10 a.m. on Saturday, April 27 at the Washington Township School. Pancakes, eggs, sausage, biscuits and gravy, hash browns and drink will be served. Proceeds will go to maintain and improve the historic Washington School Building that is used for community events.

Voas Garlic Mustard Removal

9-11:30 a.m. Saturday, April 27 at Voas Nature Area.

With the successful removal of the shrubby understory at the Voas oak savanna, we have created a disturbance that is ideal for the growth of invasive garlic mustard. The good news is that we have been able to control it wherever we pull it! If you have considered other outdoor volunteer days, but thought the work might be too difficult, garlic mustard is an easy pull! Children welcome and encouraged. Registration not required.

National Prescription Drug Take Back Day

10 a.m. - 2 p.m. Saturday, April 27 at Perry Police Department, 908 Willis Ave.

The Perry Police Department will be participating in the DEA's National Prescription Drug Take Back Day on Saturday, April 27. Drop off your unused, unwanted or expired medications at the Perry Police Department on that day. Needles or inhalers will not be accepted. For more information or to find a site closer to you go to www.dea.gov/takebackday

RRVT 35th Anniversary Bike Ride

12-4 p.m. Saturday, April 27 along Raccoon River Valley Trail.

Join the Raccoon River Valley Trail Association for the 35th Anniversary Bike Ride on the RRVT on April 27. This event coincides with National Celebrate Trails Day, making it the perfect opportunity to pedal through the serene natural beauty of the RRVT's paved trail. Gather by 11:45 a.m. at the trailhead in Dallas Center, located in Heritage Park. The ride is a round-trip starting in Dallas Center and heading to Perry. Upon reaching Perry, we'll connect to the High Trestle Trail. While the High Trestle connection is still in progress, riders are welcome to enjoy the completed sections. This ride is suitable for all riders. Riders can go at their own pace and choose their preferred distance. Food and drinks are available at businesses along the trail in Dallas Center, Minburn and Perry. Helmets are strongly encouraged for everyone's safety. While participation is free, riders can RSVP through the Raccoon River Valley Trail Association's Facebook page.

Spaghetti Dinner

6-8 p.m. Saturday, April 27 at Veterans Hall 410 6th St., Waukee.

Danny White VFW Post 11517 Auxiliary will host a spaghetti dinner from 6-8 p.m. on Saturday, April 27. The dinner is open to all. A free-will offering will be taken to benefit our veterans and their families.

Woodward Community Blood Drive

11 a.m. - 3 p.m. Monday, April 29 at 306 W 3rd St., Woodward.

LifeServe Blood Center is calling all community members to participate in blood donation drives throughout April, in your neighborhood. Each donation bolsters the blood supply for local hospitals and LifeServe aims to emphasize the crucial role that each donor plays in supporting healthcare services within their own communities. Woodward-Granger High School will host a blood drive from 11 a.m. to 3 p.m. on Monday, April 29. Schedule a blood donation appointment online at lifeservebloodcenter.org or call 800.287.4903.

Veterans Memorial Wall Nominations

Tuesday, April 30.

In response to public demand, an additional wing to the beautiful Dallas County Veterans Memorial Wall is being proposed. If you have a family member or other special veteran who is serving or has served in the US Military and has ever resided in Dallas County, you can honor their service with a personalized brick in the wall. The cost is \$100 for each brick, and applications are available either online at www.minburn.org (under the Announcements tab), or at the Perry, Adel, or Minburn public libraries. You only have until April 30 to submit an application before the final brick order is placed. For additional information, contact Don Richardson at 515-321-9320 or Paul Snyder at 515-422-2820.

Tacopalooza

4-7 p.m. Wednesday, May 1 at Perry VanKirk Career Academy, 1011 2nd St., Perry.

DMACC students, staff and community members are invited to celebrate the end of the semester. The event will feature inflatables, a dunk tank, music and \$1 TA-COS (limited supply).

Project Deliver the Love

9 a.m. - 4:30 p.m. Thursday, May 2 at Perry Lutheran Homes Eden Acres Campus, 1300 28th St., Perry.

"Project Deliver the LOVE" is an incredibly meaningful and fun way to celebrate and connect with our community's older adults! This year, 100 #DifferenceMakers (volunteers) are needed to bring sunshine, joy, and love to 350 older adults on Thursday, May 2. Volunteer shifts are 1.5 hours each so you can have time to chat for a bit to each older adult you deliver to. Delivery assembly will take place at the Perry Lutheran Homes Eden Acres Campus. Sign-up to volunteer by texting "deliverlove" to 515-320-8256 or by visiting perrylutheranhomes.org/pdl/.

Plant Sale

9 a.m. - 2 p.m. Saturday, May 4 at Dallas County Fairgrounds Community Building, 28061 Fairground Dr. Adel.

The Dallas County Master Gardeners plant sale will return on Saturday, May 4. All proceeds will benefit the Dallas County Master Gardeners' demonstration garden. The event is open to the public. Items for sale will include perennials, annuals, vegetables, house plants, succulents, horticulture books, pre-potted arranged plants, plant containers and garden art.

To submit events to be included in the Around the County round-up, email news@adelnews.com or news@theperrychief.com.

Facing Chronic or Serious Illness?

Ask for the EveryStep experts

If you or a loved one needs care at home for recovery from illness or injury, help with chronic conditions, or care for serious illness — ask for EveryStep to be your provider. Our trusted nonprofit services offer:

- Therapy or nursing care after an injury or hospital stay
- Expertise managing pain, symptoms and medications
- Compassionate hospice services and special care for veterans

Hospice
(515) 333-5810

Home Care
(515) 558-9591

everystep.org/findcare



EveryStep

PERRY CHIEF

HOW TO CONTACT US

Our office: 400 Locust St. Ste. 500, Des Moines, IA 50309.

As a safety measure during the pandemic, the office is not open to in-person business at this time.

Circulation: circulation@amestrib.com

Director of Sales: Chad Giddens, cgiddens@localiq.com

Obituaries: PerryChiefObits@Gannett.com

Classifieds: classifieds@amestrib.com

Editor

Allison Ullmann (515) 465-4666
aullmann@theperrychief.com

General News/Sports

news@theperrychief.com

Legals

legals@amestrib.com

Perry Chief (USPS 428-260), is published each Thursday at 400 Locust St. Ste. 500, Des Moines, IA 50309.

Copyright: The contents of this newspaper are protected by copyright. Other than for noncommercial, personal use of a limited nature, no part of this publication may be copied OR reproduced in any way without the prior written consent of the publisher. © 2024 Gannett Co., Inc. All rights reserved.

Circulation: Annual Subscription Rates: In Iowa \$46; Out of state \$50. Six Month Rates: In Iowa \$26; Out of state: \$30. "Easy Pay" option is also available. Please call 515-465-4666. Periodicals postage paid at USPS in Perry, Iowa.

Postmaster: Send address changes to Perry Chief, 7950 Jones Branch Dr., McLean, VA 22107.

Disclaimer: Print delivery available only within the newspaper distribution area. By submitting your

address and/or email, you understand that you may receive promotional offers from Gannett and its related companies. You may unsubscribe from receiving any such offers at any time by calling 515-465-4666. The advertised price for the Offer includes the one-time \$3.99 activation fee for new subscribers. The advertised price does not include the charges for any premium editions.

Premium editions are published to provide additional information and value to our readers. You agree that you will be charged up to an additional \$2.00 for each premium edition published and delivered to you during your subscription period, in addition to the cost of your subscription. The length of your subscription will be shortened by the publication of premium editions if those premium editions are delivered to you during your subscription. You may elect to be billed separately for premium editions by contacting Customer Service at 515-465-4666.

Thus, unless you elect to be billed separately up to an additional \$2.00 for each premium edition, you

agree that the length of your subscription will be shortened in proportion to the value of the number of premium editions published and delivered to you during your subscription period.

As an illustrative example, if you select a subscription of up to 12 weeks at a cost of \$48.00, and two premium editions at \$2.00 each are published and delivered to you during that subscription period, your subscription will be shortened by 1 week because the weekly cost of the subscription is \$4.00 per week and the premium edition charges total \$4.00.

Depending upon the length of your subscription and the timing of the publication and delivery of premium editions, you will not be charged for any premium editions if none are published and delivered to you during your subscription. As such, in that case only, the length of your subscription will not be shortened. The timing of the publication and delivery of premium editions is variable. There will be no more than four premium editions published during the calendar year. For more information or to cancel your subscription please call, 515-465-4666.